



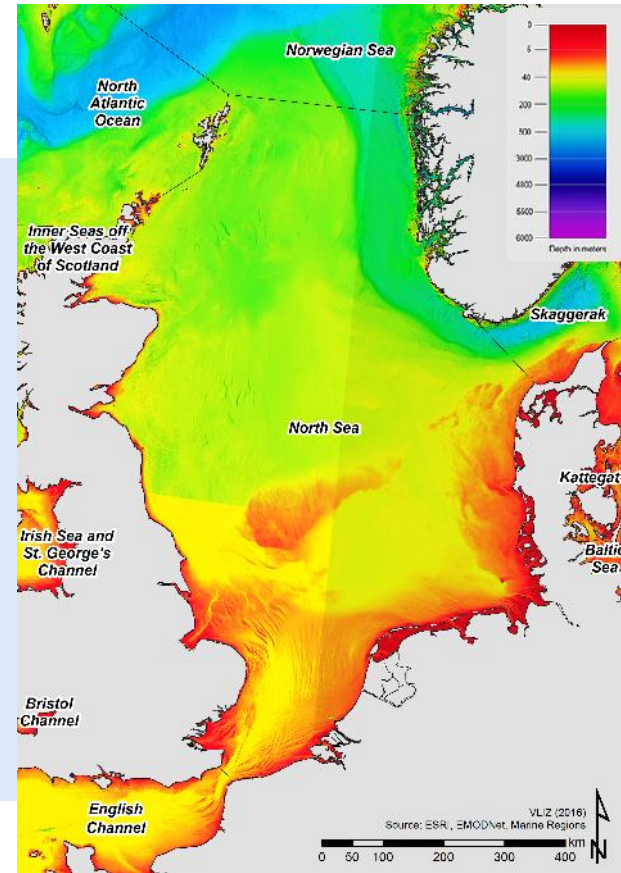
WINDEA Offshore

# Eemshaven' s Position as Logistics Hub for Offshore Wind

WAB / NNOW – Network Day Eemshaven  
26.02.2026

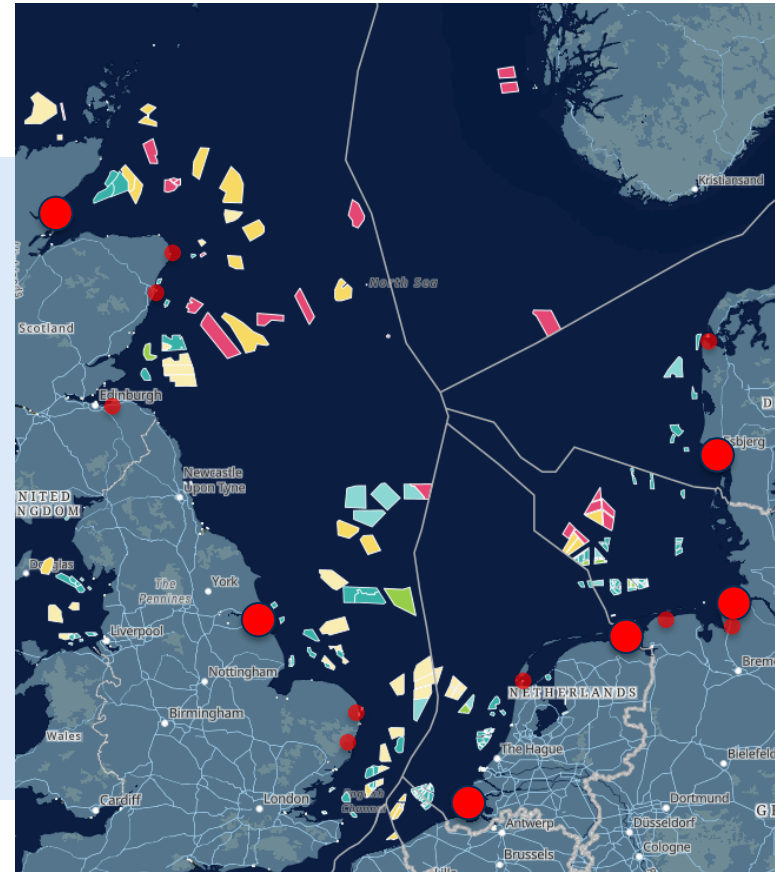
# Location of Eemshaven

- North Sea is shallow and ports are located at a shallow coast
- Eemshaven is central to the southern offshore wind industry
- Eemshaven is a deepwater port with tidal range of abt. 2m



# Location of Eemshaven

- Major North Sea Ports for offshore wind installation
- EU: i.e. Esbjerg, Cuxhaven, Vlissingen
- UK: i.e. Hull/Grimsby, Nigg
- O&M port locations with smaller ports along the coast



# Eemshaven from a vessel perspective

- Port must reliably accommodate large project vessels
  - i.e. King One: LOA 240m, Beam 51m
  - i.e. Voltaire LOA 130m, Beam 60m
- Natural and weather conditions must allow safe project execution
- Eemshaven: ~23nm from LB „Westerems“
- Dredged Channel of 13+ m provides sufficient safe UKC



# Eemshaven from a vessel perspective

## Challenges during SOV portcalls

- **Timing**  
less than 24h portcall
- **SimOps /Interfaces**  
crane operations, bunkering, waste, maintenance, ...
- **Waste**  
offshore waste is not MARPOL waste
- **Customs**  
material going offshore is leaving the EU



# Eemshaven from an installation perspective

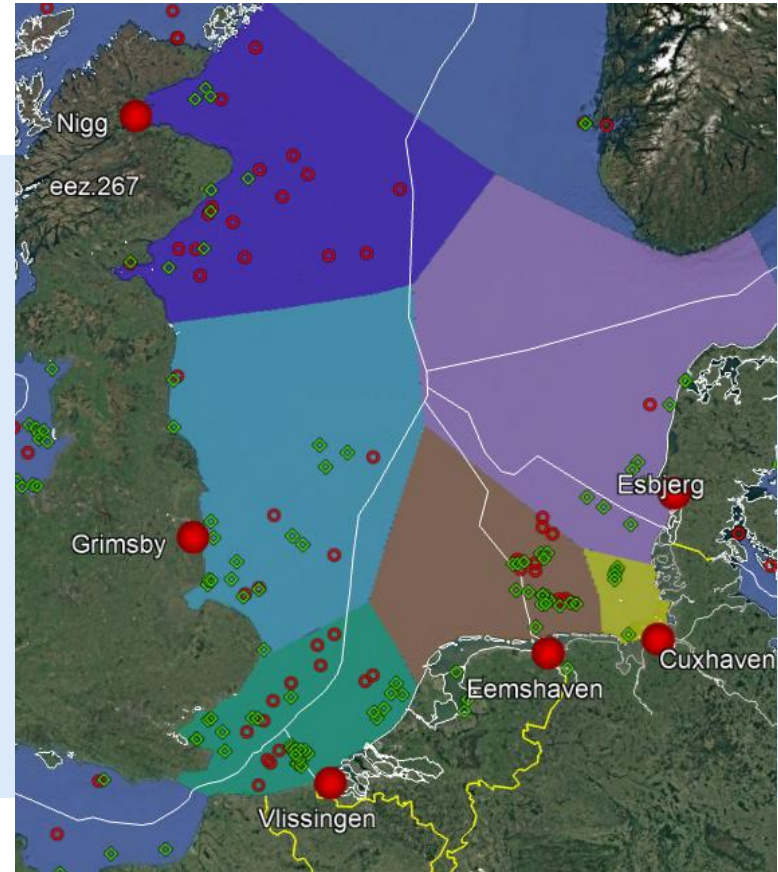
## Buss Terminal Eemshaven

- 40 ha storage area
- 694m quai in Julianahaven
- 2x heavy duty quai (20 & 40 t/m<sup>2</sup> UDL)
- Extensive experience



# Eemshaven from an installation perspective

- Installation ports must be reasonably close to the windfarm construction site
- Further factors affecting installation port advantages
  - Experience and operational excellence
  - Accessibility from sea and from land
  - Natural conditions (water depth, environment)
  - ...

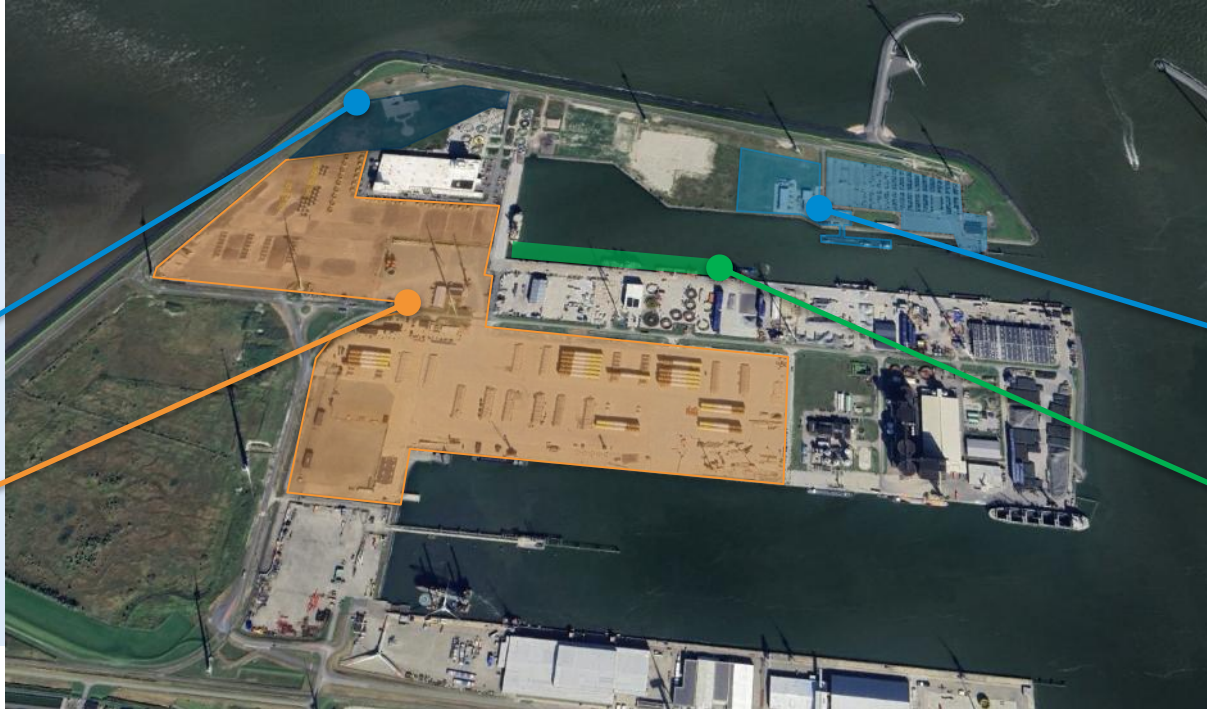


# Eemshaven from an O&M perspective

- Factors affecting an O&M base port
- Operations that are planned/prepared
  - annual maintenance
  - Troubleshooting
- WTG inspections
- Transporting modes for personnell and equipment



# WINDEA in Eemshaven



Eemshaven  
**heliport** EMS

**Heliport**

**BUSS**  
Terminal Eemshaven

**Installation Port**

**EMS** Maritime  
Offshore nv

**O+M Base**

**BOM**

**WINDEA La Cour**  
**WINDEA Jules Verne**

# Service Portfolio



## CONSTRUCTION SERVICES

- ↻ Port & Logistics
- ↻ Charter Management
- ↻ Marine Coordination
- ↻ Installation & Commissioning
- ↻ Helicopter Operations
- ↻ Project Consultation & Concepts
- ↻ PPE Service & Rental, Tool Service



## O&M SERVICES

- ↻ Port & Logistics
- ↻ CTV & SOV
- ↻ Control Room Services
- ↻ WTG & Blade Services
- ↻ Helicopter Operations
- ↻ Project Consultation & Concepts
- ↻ PPE Service & Rental, Tool Service



## MEDICAL SERVICES

- ↻ Rescue Helicopter
- ↻ Paramedic
- ↻ Telemedicine
- ↻ Medical Material



## TRAINING SERVICES

- ↻ Safety Trainings (GWO, DGUV, VDE)
- ↻ HUET & Sea Survival Training
- ↻ Electrotechnical Trainings
- ↻ Special Trainings
- ↻ Customized Trainings



**98,300+**

Total Operating  
Hours of our Crew  
Transfer Vessels



**514,000+**

Hours worked by  
Paramedics in  
Offshore Wind Projects



**17**

Installation  
Port Projects  
completed



**~62.3**

Transfers per  
Working Day per  
Crew Transfer Vessel



**5,100+**

Bookings for  
Training Services  
in 2021



**2,800+**

Offshore WTG  
Components  
handled



**116,000+**

Gangway Transfers  
with our Service  
Operations Vessels



**THANK YOU  
FOR YOUR ATTENTION!**



WINDEA Offshore GmbH & Co. KG  
Überseering 4 · 22297 Hamburg  
Phone: +49 40 7420376-0 · [info@windea.de](mailto:info@windea.de) · [www.windea.com](http://www.windea.com)

